

IL12HR

An A3 plus model specifically designed with integrated cooling fans and multiple speed/temperature settings (6/5).

For those who need a lamination system that guarantees superb results across the complete cross-section of modern materials – photos, colour copies, laser prints, high density litho prints and even digitally printed materials.

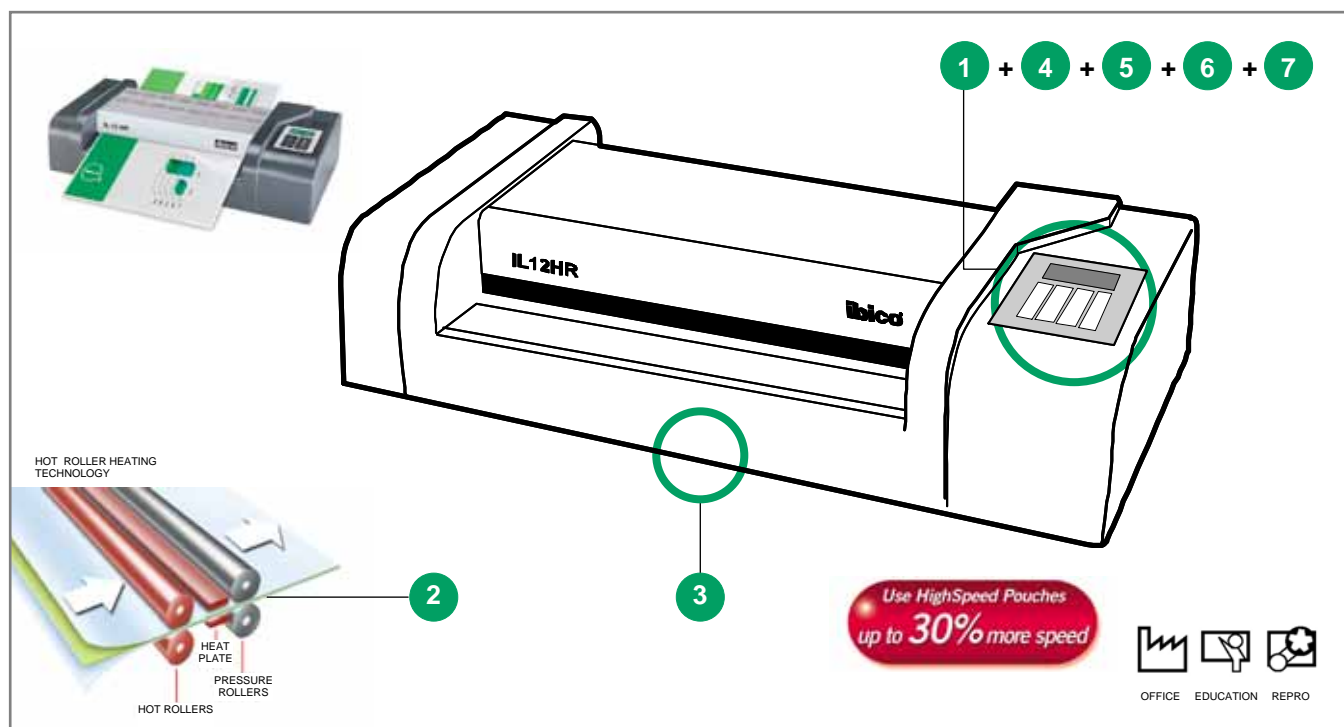
The combination of technology and experience in other laminating fields, has created in the IL12HR the ability to laminate in all film grades – with or without protective Carriers – from the super light 37.5 Micron Pro-Film to super heavy 250 Micron plus the entire range of High Speed Pouches.

- Lamination width* from ID size to **A3 Max** (330 mm)
- **Hot Roller Heating Technology**
2 x Hot Rollers plus Plate plus 2 x Pressure Rollers
- 330mm Throat width
- Max. Laminating Thickness – 3.5 mm
- Warm Up time – 2.5 to 8.5 minutes depending upon setting (up to 2 x 250 Mic. (**500 Total**))
- Reverse Mode
- Robust and heavy duty metal construction

* *Lamination Width* is the maximum insert width

Features & Benefits

- 1 **Digital Display with 6 speed settings**
Give Users pre-set modes for popular applications as well as finger-tip control over speed and temperature settings for accurate media-pouch compatibility
- 2 **Hot Roller Heating Technology:** for a better result
- 3 **Heavy metal construction**
- 4 **Speed control:** variable Speed max 800 mm/min to min 160 mm/min
- 5 **Temperature: different pre-set settings**
to adjust temperature for each application
- 6 **Reverse Mode:** Anti-jam function to solve any miss-feeding problems
- 7 **Preheat function**



Technical Specifications

Photo quality	Yes
Heat-up Time (75 mic)	2.5-8.5 min.
Speed mm/min.	160-800
Temperature control	Variable (Digital)
Cold Lamination	Yes
Speed control	Variable/6 std settings
Rollers	4 + Heated Plates
Max. Document size	A3
Max. pouch thickness	2x250 Micron (500 Total)
Release Function	-
Reverse	Yes
Ready Lamp	-
Ready LED Light	-
Display	Yes

Pouch counter	-
Auto switch off	-
Time to laminate 1 Standard A4 Pouch	23 sec
A4 Laminates / hr*	117
Time to laminate 1 High Speed Pouch	16 sec
High Speed Pouches Laminates / hr*	Yes 222
Warranty	2 years
Dimensions	550x 270x 140
Certification	GS / TÜV / CE
Weight	13.6 kg
Power Consumption Watts / Amps	1300W/ 6.0A

GBC reserves the right to modify specifications without notice.

* Estimates only

Product Codes:
IB502071



www.qbceurope.com